

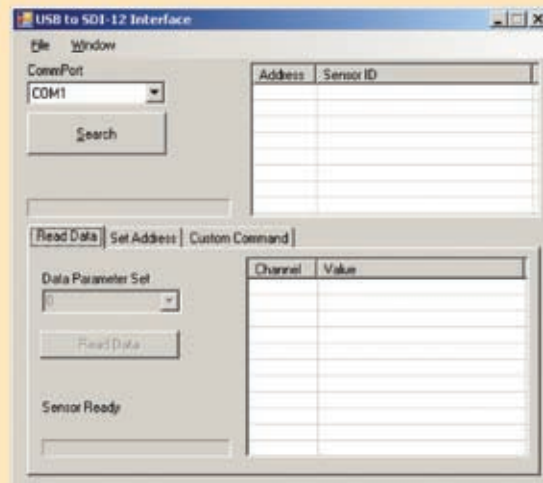
# SDI 12-USB Test Interface

Turn your PC screen into a 'window' that will allow you to look in on the data traffic on your SDI bus. Not only that; you can even take command yourself and directly interrogate any SDI sensor within the system.

SDI-12 is an industry standard serial data interface used extensively between low-power environmental monitoring sensors and loggers. Unfortunately computers do not come equipped with such an interface. NIWA has developed a tiny USB to SDI-12 interface that allow sensors and SDI-12 links to be checked using a standard PC.

This SDI-12 USB interface has been designed to provide a simple connection between any standard SDI-12 serial data link and any laptop or desktop PC that has a spare USB port.

When used with the associated PC application the interface allows SDI-12 serial data to be viewed. It also allows SDI-12 commands to be sent. In this way sensors may be easily checked and configured and SDI-12 data connections can be monitored.



## SDI 12-USB

- Plug 'n' play PC interface
- Auto SDI-12 sensor address detection
- Self-powered from the PC USB port



Available from:  
Unidata Pty Ltd  
40 Ladner Street,  
O'Connor WA 6163  
Australia  
Tel: +61 8 9331 8600  
Fax: +61 8 6210 1854  
[www.unidata.com.au](http://www.unidata.com.au)